



## Start of a New Era



*What is the significance of April 1<sup>st</sup> and why does it mark the start of a “new era”?*

This is the day when your library becomes a **community library** – staffed and run entirely by volunteers – supported by NYCC.

Since 2012 volunteers have worked hard keep the library open as Government cuts have had an increasing effect on the future of local libraries.

The aim is to create a *community hub*, where all sorts of activities take place.

For the *community library* to be successful, it is vital that local people get involved. Could you be one of those people?

If so, do please email us at [contact@boroughbridgelibrary.org.uk](mailto:contact@boroughbridgelibrary.org.uk)





## Walkers are Welcome Easter Walking Festival

<http://www.boroughbridgewalks.org.uk>

**Boroughbridge Walkers are Welcome** group is working hard to make sure their Easter Walking Festival is once again a successful and enjoyable event for all the visitors to the area and the local community.

With sponsorship from many businesses in the town, the group this year have three new walks ,The Inns of Boroughbridge, Rabbit Hill and the Kirby Hill map reading experience.

Along with the ever popular Hightimers Ghost walk and the Roman Ramble, The Beer on T'Brigg Festival at The Coronation Hall and the Chamber of Trade Easter Bonnet and Window shop competition, the Walkers are Welcome Group are supporting the Exhibition and open day for the New Boroughbridge Community Library on Easter Saturday where details of the Town Treasure Hunt will be available.

For full details of the weekend's events, see the complete programme available from the local shops and businesses, or download from [www.boroughbridgewalks.org.uk](http://www.boroughbridgewalks.org.uk) you can also find us on Facebook and Twitter.

As part of the exhibition for the opening of the new Community Library for Boroughbridge on Easter Saturday 15 April, the Boroughbridge History Society will be having a display about the History of Boroughbridge and of the River Ure.

The exhibition will be in the Jubilee room above the library from 10 am to 4. If you have information or photographs which you would like adding to our Boroughbridge History Archive do bring them along. This would all help towards the project of producing a new book about history of Boroughbridge which the group plan to publish later in the year.

Contact 01423 322988 if you require further details.



**The next Film Society meeting will be on Tuesday, April 25 at Coronation Hall – 8pm**

**What We Did On Our Holidays**

**Cert PG13 2015 UK Comedy/Drama**



Doug and Abi take their kids on a family vacation.

Surrounded by relatives, the kids innocently reveal the ins and outs of their family life and many intimate details about their parents.

If you would be interested in a matinee screening of old films, please let us know.

Contact us at [film@yorevision.org.uk](mailto:film@yorevision.org.uk) or ring 01423 325 808

# The Aldborough Roman Burial

Mags Felter, Conservator, York Archaeological Trust  
Nick Wilson, Hundayfield Farm

Wednesday 5th April 7.30pm

Aldborough Village Hall



In 2007, York Archaeological Trust undertook the archaeological excavation of a Romano-British burial located close to Hundayfield Farm. The burial was contained by a lead coffin placed within a stone cist. The decision was made to excavate archaeologically and fully remove both the cist and lead coffin, rather than to preserve them in situ as they would have suffered extensive damage when the field was deep ploughed.

The landowners, Mr and Mrs Wilson, were concerned that the tomb and its recipient were removed with care and preserved as best as possible before further ploughing took place. English Heritage (Yorkshire & Humber Region) funded the project.

Mags Felter, Conservator at York Archaeological Trust is coming to Aldborough to tell us what she has discovered about this remarkable find. Nick Wilson, the landowner, joins us to talk about the profound impact that this archaeological discovery has had on him.

Cost: Visitors £5.00 (Friends of Roman Aldborough members free)

For more information, go to [www.romanaldborough.co.uk](http://www.romanaldborough.co.uk) or ring 01423 325 808

## BCC 100+ CLUB - MINIBUS OUTINGS

Passengers must be a member of Boroughbridge & District Community Care 100+ Club. Contact the office on 01423 324504 for more information or to book.

TUES 4 APR - The Deep/Hull	9am-5pm	£10
THURS 27 APR – Chesterfield	9am-5pm	£10
TUES 2 MAY – Kendal	8.30am-5pm	£10
MON 8 MAY - Skipton including canal cruise	9am-5pm	£10
THURS 18 MAY - Haworth & Saltaire	9am-5pm	£10
TUES 23 MAY - Hawes including Market	9am-5pm	£10
TUES 30 MAY – Liverpool	7.45am-5pm	£10

# Brighter Boroughbridge and District NEWS

The new gardening season began on Tuesday 28th February with volunteers tidying the Chatsworth Grove site. Pupils, under the guidance of their teacher, Theresa Pridmore, joined in and made an excellent contribution to the session.

Local traders have invested again in hanging baskets, ensuring a feast of delight in the summer and the troughs maintained by Fink, Bloomerang and local residents, continue to look good.

The AGM was held a few weeks earlier and the decision was made to enter Yorkshire in Bloom again this year. We are still in the category of large village but that will all change when the proposed new housing developments are completed. Last year, in the summer judging, we were awarded silver gilt, only one step below gold. This was an excellent start but we are determined to do just as well this year.



There are plans to change the display at Stump Cross roundabout, which has flourished for two years, honouring those that died in WW1. The new display will require new, exciting wooden cut outs from JennyRuth Workshops but we are not going to reveal what that is to be just yet. *But there have been changes!*

We are also going to have a board placed on the library wall, thanking local companies that helped us during 2016. It is hoped to have that up before the spring judging.

If you look around Boroughbridge and district you cannot fail to delight in the snowdrops and crocuses and soon the daffodils and blossom will be out and spring will be seen in all its glory. If you would like to become involved with the group don't be shy and don't worry if you feel you know nothing about gardening. Everyone is welcome. Just contact John Goss at [john@gossonline.co.uk](mailto:john@gossonline.co.uk) or ring 01423 323123



## AT YOUR SERVICE: ANDREW JONES MP



Contact Andrew's office  
to book a surgery appointment:

**01423 529614**  
Email: [andrew.jones.mp@parliament.uk](mailto:andrew.jones.mp@parliament.uk)  
Write to: Andrew Jones MP  
57 East Parade  
Harrogate  
HG1 5LQ

This could be your  
advert

*Only £12.50*

*Send us your copy*



Your local one-stop-shop for all your rural needs



# Rabbit Hill

COUNTRY STORE AND  
RURAL SUPPLIES

FARMING • EQUINE  
PET • GARDENING



Open 7 days a week

Visit us just outside Boroughbridge on the A168  
Great North Road, Arkendale, Knaresborough, HG5 0FF

**T 01423 396800** **E [info@rabbithillcountrystore.co.uk](mailto:info@rabbithillcountrystore.co.uk)**

Reliable Helpful Competitive Service



A new shape of lawyer

## Helping you onto the property ladder

Even though buying a first home can be a challenge, a significant proportion of young people continue to aspire to getting on the property ladder.

A recent survey by Yorkshire headquartered retail bank First Direct found that almost three quarters of all 18 to 34-year-olds thought buying a house was important.

At Hethertons Solicitors, our lawyers can advise on:

- The conveyancing process
- Avoiding problems such as punitive restrictive covenants
- Buying a new-build property

For further details about our residential property services, call **01423 322940** or email [law@hethertons.co.uk](mailto:law@hethertons.co.uk)



[hethertons.co.uk](http://hethertons.co.uk)



# Events Diary

To have your events listed, please send them to [diary@lowerurenews.co.uk](mailto:diary@lowerurenews.co.uk)

APR

**5**

Wed

## **Friends of Roman Aldborough @ Aldborough Village Hall**

Apr 5 @ 7:30 pm

The Aldborough Roman Burial, Mags Felter Conservator, York Archaeological Trust/Nick Wilson, Hunday Field Farm. 01423 325808.

## **Youth Club @ Boroughbridge Social Club**

Apr 5 @ 6:30 pm – 8:00 pm

For children & young people aged 9-14. £1.50 including drink & snack. 07881 797716

APR

**7**

Fri

## **Local History Talk @ Minskip Village Hall**

Apr 7 @ 7:30 pm

Talk on the history of Minskip and Boroughbridge by Mike Tasker Tickets £7.50 per person, including a glass of wine and canapes. Admission by ticket only. Please contact Robert Beaumont on 01423 322365 or 07710 127713 . All proceeds to St John's Church, Minskip.

## **Roecliffe WI @ Roecliffe School**

Apr 7 @ 7:30 pm – 9:30 pm

Dementia Forward with Jill Quinn. 01423 322335.

APR

**8**

Sat

## **WI Coffee Morning @ Boroughbridge Methodist Hall**

Apr 8 @ 10:00 am – 12:00 pm

Aldborough, Boroughbridge & Dunsforth WI. Drop in coffee morning. Tea, Coffee, Cakes, Scones, Tombola & Bric a Brac Stall. Entrance Free, All welcome.

APR

**9**

Sun

## **All Saints Active8 @ All Saints Church, Kirby Hill**

Apr 9 @ 11:00 am – 12:00 pm

For children of all ages, craft activities, story and prayer. Parents stay to chat/take part. Coffee/tea for parents. [www.allsaintskirbyhill.org.uk](http://www.allsaintskirbyhill.org.uk)

APR

**11**

Tue

## **Boroughbridge Historical Society @ The Jubilee Room**

Apr 11 @ 7:30 pm – 9:30 pm

Precarious Fortunes: Ian Townsend tells a story based on an incident which took place in Victorian Harrogate, involving a young lady who inherited a fortune which completely changed her life. All welcome – guests £3, members free.

## **Skelton-on-Ure WI @ Skelton Village Hall**

Apr 11 @ 7:30 pm

Geology of Yorkshire with Roger Osborne. 01845 501848

APR  
**12**  
Wed

**Aldborough, Boroughbridge & Dunsforth WI @ Aldborough Village Hall**

Apr 12 @ 7:30 pm – 9:30 pm

Branching Design: Lucy Hutton Smith demonstrates her floral art with a difference. Competition: a fancy plant pot. 01423 325013

APR  
**13**  
Thu

**Yorkshire Countrywomens' Association @ The Jubilee Room, Boroughbridge**

Apr 13 @ 7:30 pm – 9:30 pm

All welcome. Visitors £2, members £1, including raffle, tea & biscuits after the evening talk.

APR  
**14**  
Fri

**Easter Walking Festival**

Apr 14 all-day

10.30am Inns of Boroughbridge meet St James Sq. Boroughbridge.

2pm The Bronte Walk from Gt Ouseburn Village Hall.

7.30pm Ghost Walk from St James Square. [www.boroughbridgewalks.org.uk](http://www.boroughbridgewalks.org.uk)

**Beer on T'Brigg Festival @ The Coronation Hall**

Apr 14 @ 3:00 pm – 11:00 pm

Over 20 real ales & ciders. Food available as well as music. Continues on Saturday 15th. [www.beerontribrigg.org](http://www.beerontribrigg.org)

APR  
**15**  
Sat

**Easter Walking Festival**

Apr 15 all-day

10am-12 Town Treasure Hunt starting at Boroughbridge Library Exhibition; incl. Chamber of Trade Easter Bonnet & shop window voting.

2pm Rabbit Hill walk from the Rabbit Hill Country Store on the A168. [www.boroughbridgewalks.org.uk](http://www.boroughbridgewalks.org.uk)

**Community Library Exhibition @ Boroughbridge Library**

Apr 15 @ 10:00 am – 4:00 pm

An exhibition for the opening of the new Community Library for Boroughbridge. The Boroughbridge & District Historical Society will also be having a display about the History of Boroughbridge and of the River Ure.

**Easter Coffee Morning @ Springfield Garth**

Apr 15 @ 10:30 am

Cake Stall, Raffle and Cream Scones. All Welcome! Proceeds to the Residents Amenity Fund.

APR  
**16**  
Sun

**Easter Walking Festival**

Apr 16 all-day

10am Marton Le Moor Parish Walk starting from meeting room.

2pm Roman Ramble from The Ship Inn Aldborough. [www.boroughbridgewalks.org.uk](http://www.boroughbridgewalks.org.uk)

APR  
**17**  
Mon

**Easter Walking Festival**

Apr 17 all-day

10am Map Reading for all from the picnic area Langthorpe.

2pm Myton on Swale and the battle of Myton from Myton Church. [www.boroughbridgewalks.org.uk](http://www.boroughbridgewalks.org.uk)



APR

**18**

Tue

**Boroughbridge & District Antiques Society @ The Coronation Hall, Milby**

Apr 18 @ 7:45 pm – 9:45 pm

The Leader Brothers: 'Yet Another Box.' Visitors £3, members free. 01423 360711

APR

**20**

Thu

**Mothers' Union @ St James' Church, Boroughbridge**

Apr 20 @ 2:00 pm

Rev Diane Westmoreland. The talk will be followed by tea and biscuits. 01423 325405

APR

**22**

Sat

**BCC Bingo Night @ The Coronation Hall**

Apr 22 @ 7:00 pm

Come along & support Boroughbridge & District Community Care. Doors open 7pm, first call 7.30pm. Bar. Tickets (limited) are £5 to include supper, available from the BCC office or reserve by phone. 01423 324504

APR

**25**

Tue

**Yore Film Society @ The Coronation Hall**

Apr 25 @ 8:00 pm

What We Did On Our Holidays: Doug and Abi take their kids on a family vacation. Surrounded by relatives, the kids innocently reveal the ins and outs of their family life and many intimate details about their parents. Cert PG13 2015 UK Comedy/Drama . £5. Bar, Tea/Coffee.

APR

**26**

Wed

**Youth Club @ Boroughbridge Social Club**

Apr 26 @ 6:30 pm – 8:00 pm

For children & young people aged 9-14. £1.50 including drink & snack. 07881 797716

MAY

**2**

Tue

**Kirby Hill WI @ The Coronation Hall**

May 2 @ 7:30 pm – 9:30 pm

Making Communities Dementia Friendly; Jill Quinn. 01423 320745

MAY

**3**

Wed

**Youth Club @ Boroughbridge Social Club**

May 3 @ 6:30 pm – 8:00 pm

For children & young people aged 9-14. £1.50 including drink & snack. 07881 797716

MAY

**9**

Tue

**Boroughbridge Historical Society @ The Jubilee Room**

May 9 @ 7:30 pm – 9:30 pm

BRIXMIS: The British Commanders-in Chief Mission to the Soviet Forces in Germany 1946-1990. (Spies in uniform). Keith Ryding gives an intriguing account of activities behind the Iron Curtain during the Cold War. All welcome – guests £3, members free. The talk will be followed by tea and biscuits.

**Skelton-on-Ure WI @ Skelton Village Hall**

May 9 @ 7:30 pm

The Flower Arrangers Garden with Pat Hutchinson. 01845 501848

MAY

**10**

Wed

**Youth Club @ Boroughbridge Social Club**

May 10 @ 6:30 pm – 8:00 pm

For children & young people aged 9-14. £1.50 including drink & snack. 07881 797716

**Aldborough, Boroughbridge & Dunsforth WI @ Aldborough Village Hall**

May 10 @ 7:30 pm – 9:30 pm

In the Footsteps of Eleanor of Aquitaine; Margaret Merrill/Jan Bell. Competition: something French. 325013

MAY

**11**

Thu

**Yorkshire Countrywomens' Association @ The Jubilee Room, Boroughbridge**

May 11 @ 7:30 pm – 9:30 pm

All welcome. Visitors £2, members £1, including raffle, tea & biscuits after the evening talk.

MAY

**12**

Fri

**Roecliffe WI @ Roecliffe School**

May 12 @ 7:30 pm – 9:30 pm

Up Cycle for the Garden with Lucy Hutton Smith. 01423 322335.

MAY

**14**

Sun

**All Saints Active8 @ All Saints Church, Kirby Hill**

May 14 @ 11:00 am – 12:00 pm

For children of all ages, craft activities, story and prayer. Parents stay to chat/take part. Coffee/tea for parents.

MAY

**16**

Tue

**Boroughbridge & District Antiques Society @ The Coronation Hall, Milby**

May 16 @ 7:45 pm – 9:45 pm

Tim Phelps – 'Aspects of Furniture and Restoration'. Visitors £3, members free. 01423 360711

MAY

**17**

Wed

**Youth Club @ Boroughbridge Social Club**

May 17 @ 6:30 pm – 8:00 pm

For children & young people aged 9-14. £1.50 including drink & snack. 07881 797716

MAY

**18**

Thu

**Mothers' Union @ St James' Church, Boroughbridge**

May 18 @ 2:00 pm

Members' afternoon, all welcome; followed by tea and biscuits. 01423 325405

MAY

**24**

Wed

**Youth Club @ Boroughbridge Social Club**

May 24 @ 6:30 pm – 8:00 pm

For children & young people aged 9-14. £1.50 including drink & snack. 07881 797716

MAY

**26**

Fri

**Friday Night is Music Night @ Boroughbridge Methodist Schoolroom**

May 26 @ 7:30 pm – 9:30 pm

Come and sing along to classic songs of the 1930s and 1940s, to the live accompaniment of The Palm Court Dance Orchestra. Or you are welcome to just listen! Refreshments available. Admission on the door only: £3.



RABBIT HILL  
BUSINESS PARK

## RABBIT HILL BUSINESS PARK IS THE HOME OF:



Rabbit Hill  
COUNTRY STORE AND  
RURAL SUPPLIES

**Livius**  
Training Centre



**EP**  
CONTRACT  
FURNITURE

**Yorkshire Oils**  
Fuelling Homes & Industry Across Yorkshire

[www.rabbithillpark.co.uk](http://www.rabbithillpark.co.uk)

T: 01423 332135 E: [info@rabbithillpark.co.uk](mailto:info@rabbithillpark.co.uk)

Rabbit Hill Business Park, Great North Road, Arkendale, Knaresborough, HG5 0FF

[www.facebook.com/rabbithillpark](https://www.facebook.com/rabbithillpark) [@rabbithillpark](https://twitter.com/rabbithillpark)

Meeting room with extensive facilities now available to hire

**Livius**  
Training Centre

**LIVIUS TRAINING HAS MOVED!**

**BRAND NEW MODERN TRAINING ROOMS**

**RABBIT HILL BUSINESS PARK**

**5 Minutes from Boroughbridge & A1m J47 & J48**

**10 Minutes from Wetherby**

**We are always expanding our range of Open Courses  
& On-Site Courses for Business & Industry**

***Contact us to discuss how Livius Training can Train you & your Staff***

***For information on our Open Courses and On-Site Business & Industry Courses***

***visit our website [www.livius-training.co.uk](http://www.livius-training.co.uk)***

***or contact Katie on 01423 396780 or email [katie@livius-training.co.uk](mailto:katie@livius-training.co.uk)***



**6 Regiment**  
**The Royal Logistic Corps**  
Dishforth Airfield  
Thirsk  
North Yorkshire  
YO7 3EZ

**Tel: +44 7584 312 327**  
**Email: [6RLC-Chaplain@mod.uk](mailto:6RLC-Chaplain@mod.uk)**



## Memorial Garden Project

As part of 6 Royal Logistic Corps' move back to the UK from Germany, the Regiment are creating a memorial garden at Dishforth Airfield. The garden will be multi-faceted, enabling space for a collective memorial for those whom have lived and died in the service of the Corps, as well as a space for personal memorials and an area for those currently serving to find a place to pray and reflect. So to ignite a passion for gardening and raise the profile of the armed forces, the Regiment is hoping to take elements of the garden to the Harrogate flower show in 2017.

Furthermore, we are inviting local schools and community groups to take part in our "1000 Boots" competition, up-cycling old boots, adding colour to the camp, local schools and showcasing the best at RHS Harlow Carr flower show in June.

We are commissioning a landscape designer for the conceptual designs and build for the garden and the Royal Horticultural Society have been partnering with us to deliver skills workshops in the community and local schools. Finally, we are partnering with charities established for the re-skilling and rehabilitation of ex-service persons in the building and on-going maintenance of the project.

6 Royal Logistic Corps is responsible for raising funds for the endeavour and therefore would like to invite you to consider supporting the project in some way, whether it be financially, through providing reuse the contact details above.



### Local Independent Opticians

For all your Eye Care Needs

Eye Examinations OCT analysis

Dry Eye Treatment

Spectacles, Contact Lenses and Sunglasses

Fountain View, 1 High Street, Boroughbridge YO51 9AW

Telephone: 01423 323450

# Snippets

## Free – “Treasure Hunters” Easter Holiday Bible Club

on April 12-14 at Kirby Hill C of E Primary School for children aged 5 - 11

10:00am - Noon Wednesday and Thursday, 10:00am-1:00pm Friday with Easter Egg Hunt!

Please contact Grace Church Boroughbridge to preregister a place:

[boroughbridge@thecrowdedhouse.org](mailto:boroughbridge@thecrowdedhouse.org) or 07547 121061

## Springfield Garth Easter Coffee Morning

Springfield Garth, York Road, Boroughbridge, are holding their Easter Coffee Morning on Saturday 15th April 2017 from 10:30am onwards. There will be a Cake Stall, Raffle and Cream Scones. All Welcome! Proceeds to the Residents Amenity Fund.

## Friday Night is Music Night

Come and sing along (or just listen!) to classic songs from the 1930s and 1940s to the accompaniment of The Palm Court Dance Orchestra. Friday 26<sup>th</sup> May, 7.30pm, at Boroughbridge Methodist Schoolroom. Refreshments available. Admission £3 (tickets on the door only).

## York Community Choir Festival includes Local Choirs

Boroughbridge Community Choir & Queen Ethelburga's Collegiate Choir will be performing at the York Community Choir Festival on Saturday afternoon 1st April. Tickets only £9. The festival runs from 29 March and offers 5 concerts with a total of 20 choirs participating. Details of concerts and participants at

[www.josephrowntreetheatre.co.uk](http://www.josephrowntreetheatre.co.uk)

## BCC Bingo Night

Come along & support Boroughbridge & District Community Care at their Annual Bingo Evening at The Coronation Hall. Doors open 7pm, first call 7.30pm. There will be a bar. Tickets are limited, and cost £5 including supper, available from the BCC office or reserve by phone. 01423 324504. (Office open 9am to 12 noon).

## Boroughbridge Amblers - Walks

Wednesday <b>April 5</b>	<b>Kirby Malzeard</b>	4.5 miles	Ruth 01423 324 729
Wednesday <b>April 12</b>	<b>South Stainley</b>	4 miles	Gordon 01423 330 274
<b>14<sup>th</sup>/15<sup>th</sup>/16<sup>th</sup>/17th Easter Walking Festival</b>			
Thursday <b>April 27</b>	<b>Lindley Reservoir</b>	6 miles flat	Glenys 01845 577 695
Wednesday <b>May 3</b>	<b>Ripley</b>	4.75 miles	Pauline 01423 326 794
Thursday <b>May 11</b>	<b>East Whitton</b>	4.5 miles	Chris B 01423 324 011
Saturday <b>May 20</b>	<b>High Paradise/ Sneck Yate</b>	4 miles	Brian 01423 322 988
Tuesday <b>May 30</b>	<b>Poppleton</b>	5 miles	Gordon 01423 330 274
Wednesday <b>June 7</b>	<b>Burton Leonard</b>	5.5 miles	Pauline 01423 326 794
Tuesday <b>June 13</b>	<b>Hunsingore</b> <i>Evening Walk</i>	4 miles	Gordon 01423 330 274
Tuesday <b>June 20</b>	<b>Jervaux</b>	5 miles	Chris 01423 324 970
Thursday <b>June 29</b>	<b>Kettlewell</b>	5 miles	Viv 01423326

Unless otherwise stated meet in Back Lane Car Park Boroughbridge for 10 am departure. Lifts available - transport sharing is encouraged.

For further information phone walk leaders.

**EVERY ONE WELCOME**



## The Birds in Your Garden

### Columbidae – Pigeons

This is a family of some three hundred species, most of which are found in the tropics. Love them or hate them, they are everywhere! The distinction between pigeons and doves is not a taxonomic one, with the term dove tending to be used for the smaller varieties.



Pigeons are famed for their homing ability; from Roman or even Persian times, via the siege of Paris to World War 2, they were used to carry messages. When far from home they use the sun as a compass and can compensate for its movement across the sky; closer to home it seems they use local landmarks to navigate.

Did you know that pigeons can fly.....?

- at altitudes of 6000 feet or more
- at average speeds of up to 77 mph and can exceed 90 mph
- up to 700 miles in a day

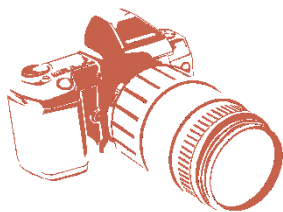
And that

- They drink by sucking water and using their beaks like straws, whilst most birds sip water and then throw their head back to swallow.
- The first commercial service using pigeons was established in 1896 in New Zealand and was known as the Pigeon-Gram Service. It ran from The Great Barrier Reef to New Zealand, (but not in reverse) with pigeons covering the distance in under two hours. They carried five messages, each requiring a special Pigeon-Gram stamp costing 2/-

See the complete article on the Lower Ure News website

[www.lowerurenews.co.uk](http://www.lowerurenews.co.uk)

# Photographic Competition and Exhibition



**Saturday, May 27**

**In the Jubilee Room above the library  
from 10am – 4pm**

**Due to unforeseen circumstances, the date has been changed to Saturday, May 27.**

**Originally we asked for photos to be submitted in electronic form. It has been pointed out that some photographers still use film! We look forward to receiving your entries in electronic form or a prints.**

**The new details:**

**1 All photos to be submitted by Friday, May 13.**  
Printed photos to Yore Vision, 1 Hall Square, Boroughbridge

**2 Classes:**  
**Junior – Primary School \***  
**Senior – Secondary School \***  
**Adult**  
*\* Please give details of age.*  
*All entries must give Name and Contact details of the entrant*

**3 Entry forms are on the Yore Vision website**

**There will be an exhibition of cameras. Do you have an old camera(s) you would like to put into the exhibition? Please contact Jane Barber - [chair@yorevision.org.uk](mailto:chair@yorevision.org.uk) or ring 01423 325 808 for more details.**